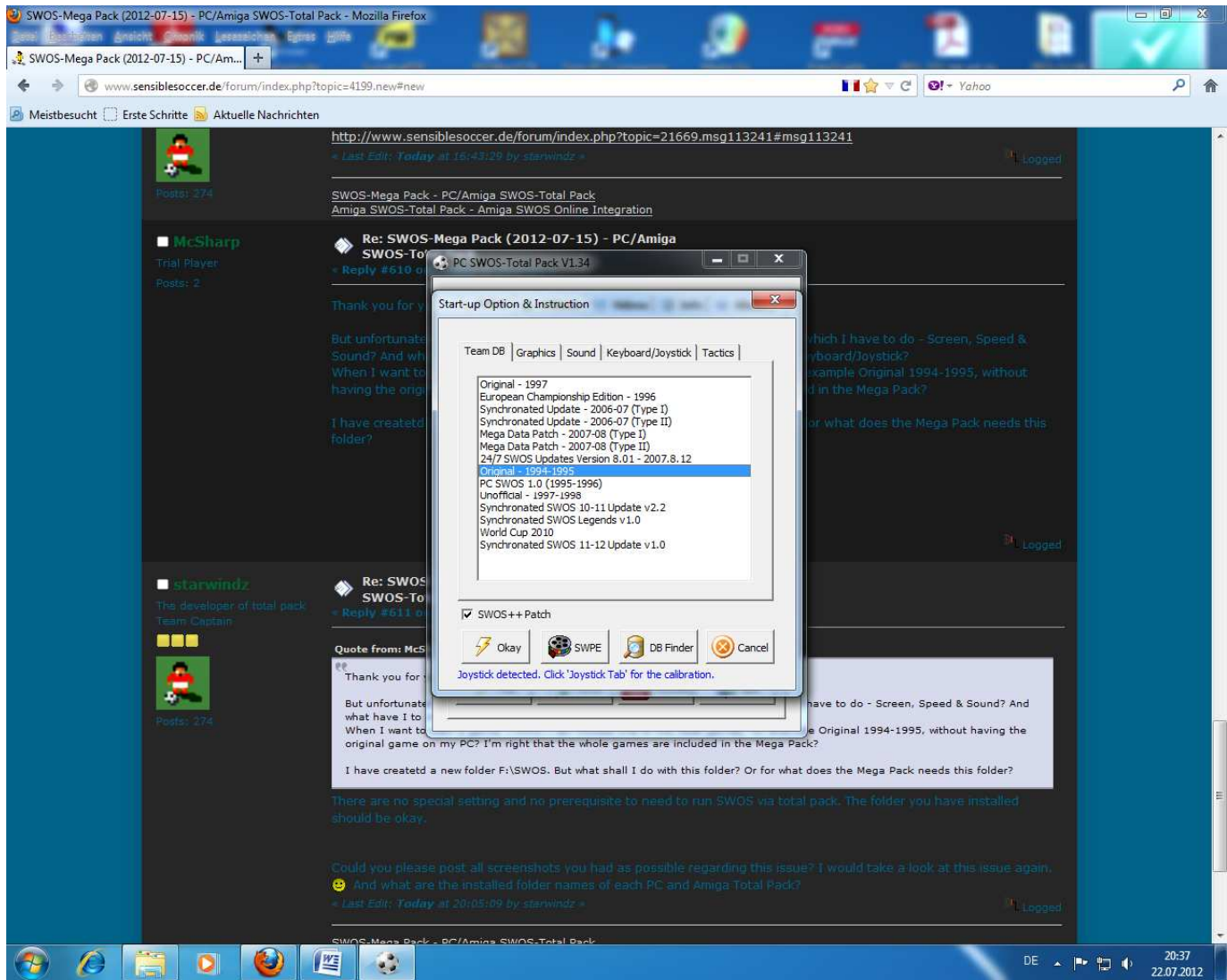


My settings with the warning



My choice of game

```
For more information read the README file in the DOSBox directory.
```

```
HAVE FUN!
```

```
The DOSBox Team http://www.dosbox.com
```

```
Z:\>SET BLASTER=A220 I7 D1 H5 T6
```

```
Z:\>SET ULTRASND=240,3,3,5,5
```

```
Z:\>SET ULTRADIR=C:\ULTRASND
```

```
Z:\>mount C "F:\PC SWDS-Total Pack\run\p02_swos_97\"
```

```
Drive C is mounted as local directory F:\PC SWDS-Total Pack\run\p02_swos_97\
```

```
Z:\>mount D "F:\PC SWDS-Total Pack\run\p02_swos_97\" -t cdrom
```

```
MSCDEX: Mounted subdirectory: limited support.
```

```
Drive D is mounted as CDROM F:\PC SWDS-Total Pack\run\p02_swos_97\
```

```
Z:\>C:
```

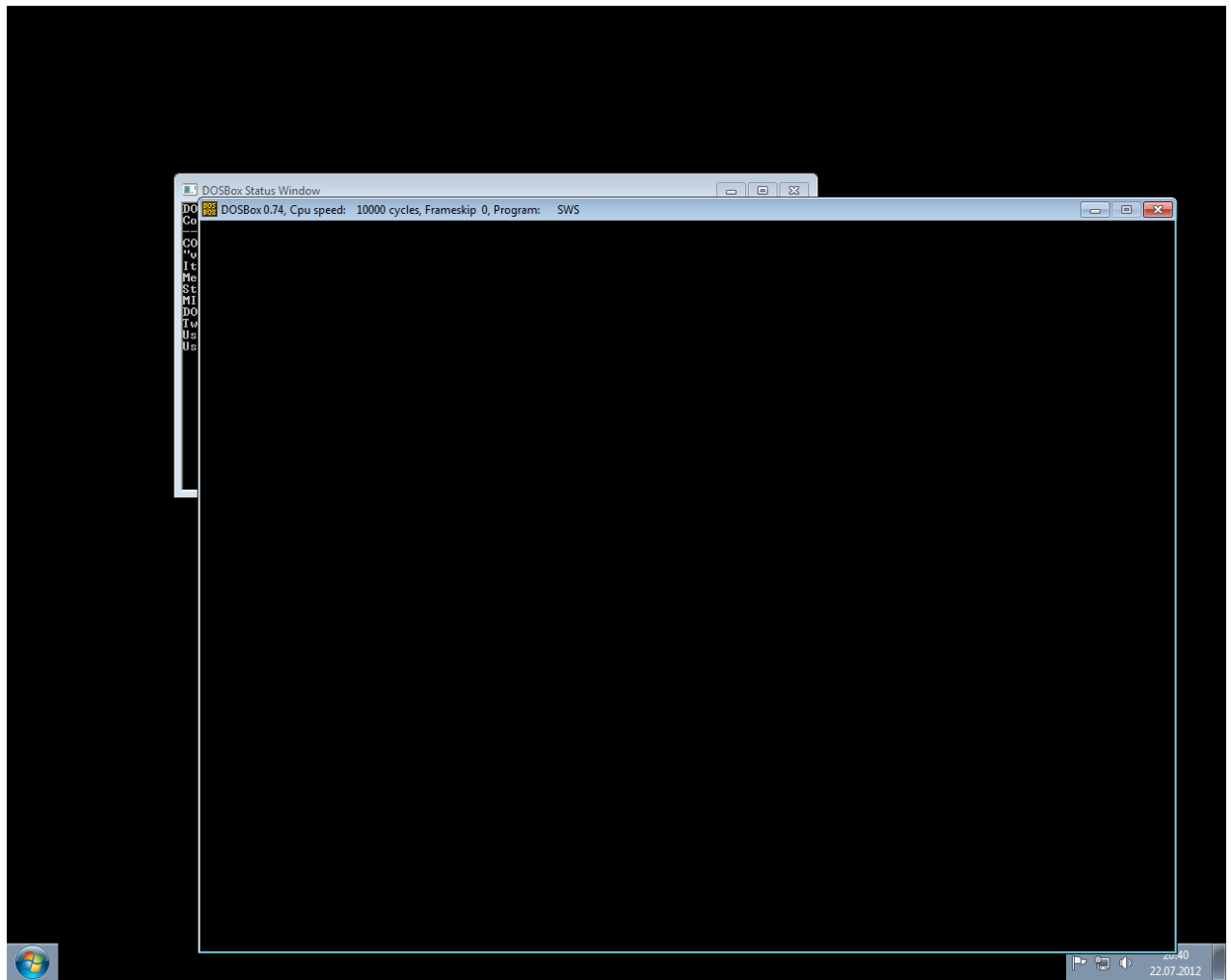
```
C:\>sws.exe /f
```

```
DOS/4GW Protected Mode Run-time Version 1.97
```

```
Copyright (c) Rational Systems, Inc. 1990-1994
```

```
Warning: This Windows version is not supported
```

The warning where I pressed the spacebar



Black screen after the front credits. For two seconds I can see some colored stripes on the screen. After that, it is black like on the screenshot for few second. And then I'm back in the setting menu like on the first screenshot.